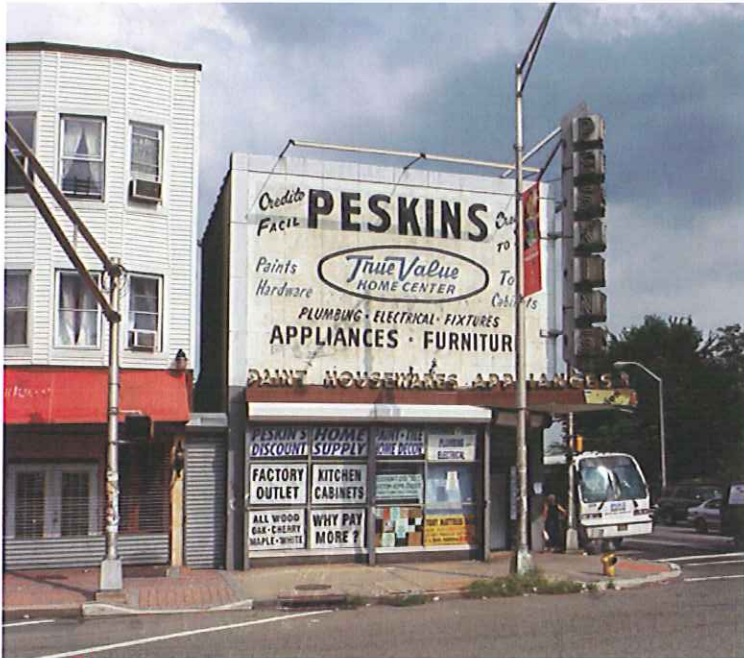


FOR SALE: Landmark property - 95 Broadway, Newark, New Jersey



- Building size: 9,842 sq. ft.
- Lot size: 25 x 257 ft.
- Urban Enterprise Zone
- Located at the intersection of Broadway and Bloomfield Avenue.
- Easy access from Route 280, Route 21 (McCarter Highway).
- Seller financing available.
- Also available as a package with storefront at 101 Broadway.

95 Broadway
Asking Price: \$599,000

101 Broadway
Asking Price: \$325,000



American Properties Realty, Inc.
140 Littleton Road, Suite 101
Parsippany, NJ 07054
Office: 973-257-1660
Fax: 973-257-1668
www.americanproperties.net

Exclusive Broker

Contact:

Irv Weiss
Cell: 201-723-8688
Office: 973-257-1660 x502

No warranty or representation, expressed or implied, is made as to the accuracy of the information contained herein, and same is submitted subject to errors, omissions, change of price, rental or other conditions, withdrawal without notice, and to any special listing conditions imposed by our principals.

